

KÖSEMEN MAKİNA

Company Catalogue

About Us

Kösemen Makina was established in 1982 in Kartepe, Kocaeli and is a company specialized in the production of high-tech machinery and equipment for various industrial fields, especially the tire sector. By offering curing tire molds, equipment and other industrial solutions, we have gained a solid position as a reliable and innovative solution partner in the sector.

In our modern production facilities, we manufacture with the highest precision and quality standards using the most advanced technology machines. All of our production processes are carried out in accordance with international quality and environmental standards with ISO 9001 Quality Management System and ISO 14001 Environmental Management System certificates. In this way, we not only offer quality products to our customers, but also contribute to environmental sustainability.

Operating with a customer-focused approach, Kösemen Makina understands the needs of our customers in the best way possible and stands by them at every stage of their projects with our flexible production capacity and comprehensive technical support. Our management team closely follows technological innovations and develops innovative solutions that are suitable for the changing needs of the sector.

Kösemen Makina, focusing on innovation and quality, quickly adapts to technological developments and directs changes in the sector. In order to keep customer satisfaction at the highest level, we adopt continuous development and improvement studies. With our innovative perspective in the sector and our expert staff, we aim to bring the technologies of the future to our customers today.

Corporate Vision

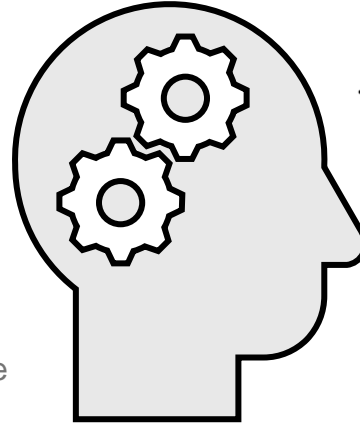
«To be a leader in the sector in which we operate by constantly increasing customer satisfaction.»



Value Creation – Focused Understanding

As Kösemen Makina, our philosophy of creating value is to provide added value to our customers not only with our products, but also with the services we offer. That's why we strive to understand our customers' needs and meet their expectations. In addition, we continue to add value to our customers by providing innovative solutions and continuously improving our quality standards. Thus, we achieve mutual success by establishing long-term cooperation and strong business relationship.

We embrace cultures such as high-quality production, innovation and R&D, customer-oriented approach, sustainable customer relations and value creation. We strive to provide our customers with the best service, innovative solutions and highquality products. Thanks to our focused approach, we always prioritize customer satisfaction.



High Quality Production



High quality production is one of our company's core values. We strive to keep the quality standards at the highest level that will provide our customers with high performance and durability in every product we produce. In this direction, we obtain high quality products by using the most advanced technologies in the production process and strictly applying quality control procedures. Thus, we strive to meet our customers' needs by offering robust, reliable and long-lasting products.

Innovation and R&D



We are constantly focusing on innovation and R&D. We follow new technologies, closely monitor developments and work to provide our customers with the most innovative and effective solutions. Our Business Development and Process Unit carries out studies to increase the quality and performance of our products by conducting research on the materials, processes and designs used in the production process. In this way, we continue to be in a leading position in the sector by offering higher quality and more efficient products to our customers.

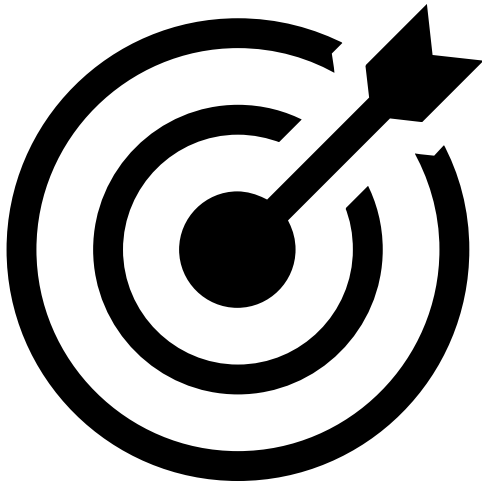
Sustainable Customer Relationships



Adopting a customer-oriented approach, providing solutions that meet the needs of our customers and establishing long-term cooperation with them are among our main goals. The satisfaction and trust of our customers are indispensable for the success of our company, and therefore, we aim to meet their expectations at the highest level by maintaining our customer-oriented approach. In addition, we aim to continuously improve ourselves and increase customer satisfaction by evaluating the feedback of our customers.

Corporate Mission

«To produce high quality products by using innovative technologies, to keep customer satisfaction at the highest level and to fulfill environmental and social responsibilities for a sustainable future.»



Sustainable Development

by placing it at the center of its business policy, it carries out meticulous studies on issues such as effective use of natural resources, waste management, use of renewable energy resources, occupational health and safety. It aims to leave a healthy and livable world to future generations.



Customer Satisfaction

It aims to meet customer satisfaction completely and accurately, to understand continuously developing customer expectations, to support customer satisfaction with continuous after-sales activities and to keep customer satisfaction at the highest level.



Solution Focused Approach

It aims to produce innovative and effective solutions for customer needs by placing it at the center of business processes. In this way, it acts accurately and quickly to solve customers' problems, increases customer satisfaction and creates long-term cooperation.



Increasing Training and Workforce

It offers various training programs and opportunities to continuously improve the skills and knowledge levels of its employees. In addition, it supports the local workforce and develops projects aimed at creating employment in order to increase the workforce. Thus, it contributes to the career development of the employees and supports the economic and social development of the society.

Corporate Management

«We are committed to our transparency and ethical values»

Kösemen Makina adopts the principle of doing a transparent, accountable and ethical business by adopting corporate governance principles. In addition to being responsible to its stakeholders, the company closely follows national and international legal regulations. In addition, in accordance with corporate governance principles, it strives to improve communication between board members, employees and stakeholders, and constantly evaluates the company's activities and decisions, seeking opportunities for improvement.



| Equality Principle

It ensures that all its employees and business partners are treated equally, without discrimination based on gender, race, religion, age, sexual orientation or any other discriminatory factor. It tries to provide fair and equal treatment without any discrimination between its business partners and suppliers.



| Principle of Responsibility

As well as being responsible towards all its stakeholders, it tries to minimize its environmental impacts by adopting environmentally friendly and sustainable business practices.



| Transparency Policy

It implements high standards in areas such as financial reporting and transparent business practices, by adopting clear and accurate information policies for all its stakeholders.

Our Values

“We protect our values and act in accordance with them.”

We adopt an environmentally sensitive production approach. We pay attention to the use of recycled materials and contribute to the environment by minimizing the use of environmentally harmful substances.

Environmental Responsibility



Customer Focus



Customer satisfaction is our top priority. We value our customers and work to meet their needs.

We attach great importance to our high quality standards. The quality of our products is controlled by performing quality control processes during the manufacturing process.

Quality



We work in accordance with ethical values. We behave in accordance with business ethics and ensure that our employees act in accordance with these values.

Business Ethics



We embrace the importance of working together and aim to achieve common goals by collaborating.

Cooperation



Innovation and Continuous Improvement



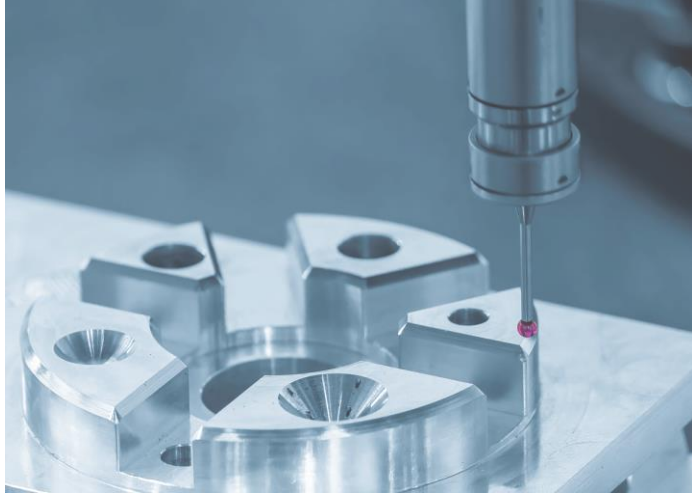
We focus on continuous improvement and innovation. We follow new technologies and work to provide higher quality products to our customers. We continuously improve our business processes and employees and aim to achieve better and higher quality.

Integrated Management System

- In line with the environment and people-oriented policy determined within the framework of Quality Management, Environmental Management, Occupational Health and Safety Systems;
- To continuously improve all processes by effectively managing risks,
- Working with zero accident principle on occupational health and safety,
- Increasing company performance and efficiency of production,
- To encourage the participation of employees in occupational health and safety studies and to provide an open communication environment,
- To use energy efficiently, to prevent environmental pollution, to protect environmental balance and natural resources,
- To ensure information security and business continuity in all its activities,
- To comply with national and international legislation requirements,
- To manage relations with its stakeholders in a transparent manner and with a common mind,
- To ensure continuity in customer satisfaction,
- It is committed to supporting and developing its suppliers.



Quality Management System



In the products and services provided; To keep customer satisfaction at the highest level, to manage customer feedback effectively, to eliminate processes that do not create value, to deliver on time with the effective use of resources and to create a quality management system that aims at continuous improvement.

To be a reliable and sought-after company in an understanding that fully meets the needs and expectations of the customer in all processes,



- To follow and apply technological developments closely in order to reduce costs and increase profitability,
- To continuously increase the quality level by giving importance to teamwork so that all employees become more competent and able to use their talents at the highest level within the framework of quality systems,
- To establish quality awareness in all employees,
- To prevent the inconveniences that may arise later by producing the most appropriate, most accurate and most economical solutions in the fastest way,
- It aims to be an exemplary organization that respects the society and the environment we live in, and to contribute to the country's economy by constantly improving its business volume.



**World-Class
Manufacturing**



**In-House
Trainings**



**Team
Work**

%0

**Zero Defect
Policy**



**Continuous
Productivity**



**Customer
Satisfaction**



Environment Management Systems

Kösemen Makine, which has adopted the principle of following environment and human-oriented policies in all business processes,



To protect natural resources and use them in the most efficient way,



Continuous improvement by effectively managing environmental risks,



To develop solutions for sector-specific environmental problems by following technology closely,



To evaluate the environmental impacts in all its investments and to consider the best available techniques to minimize the impacts,



To comply with all national legislation requirements related to the environment,



To be aware of the negative effects of climate change and to contribute to the process,



It is committed to improving the environmental awareness of its employees, contractors and other solution partners.

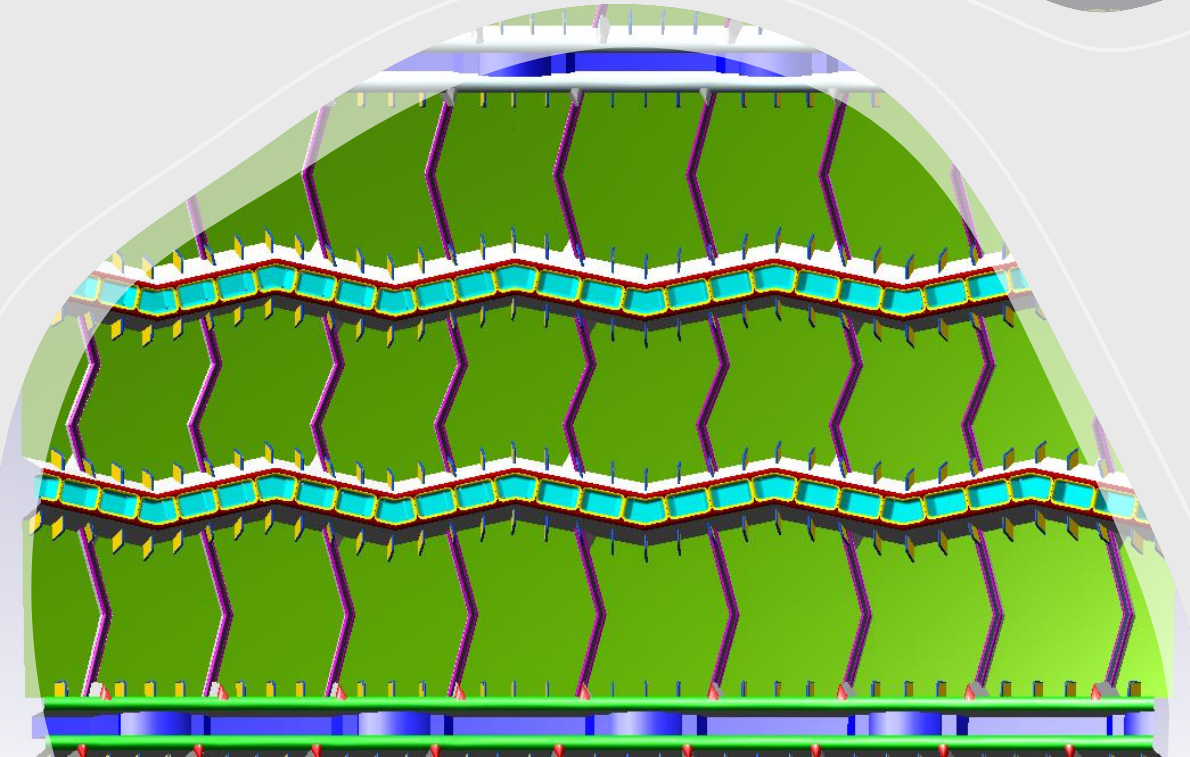
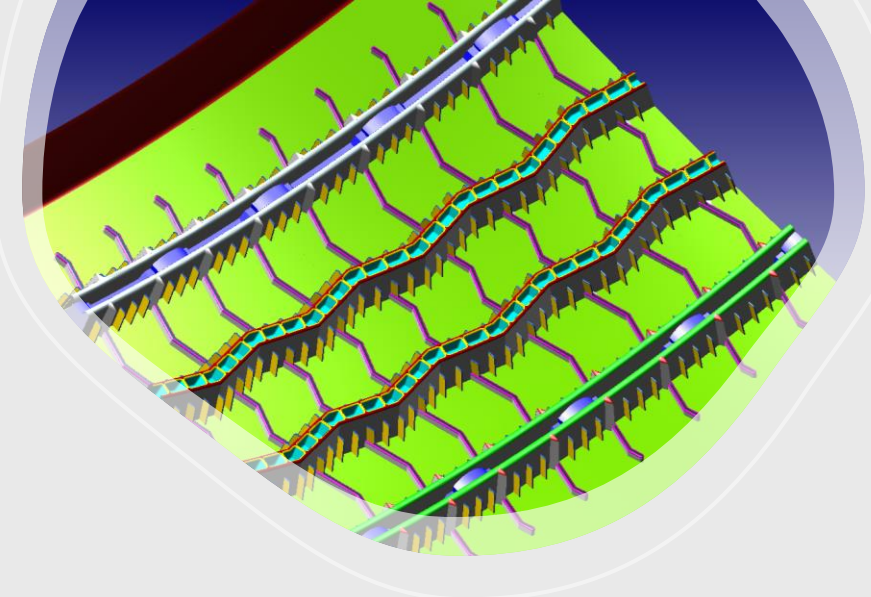
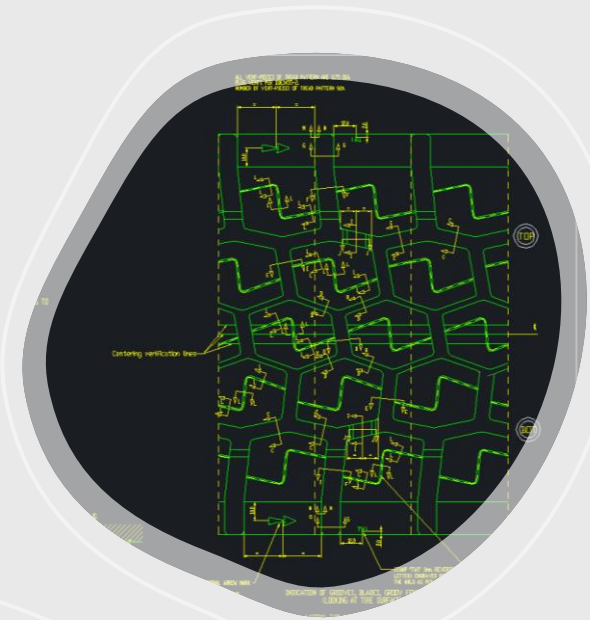
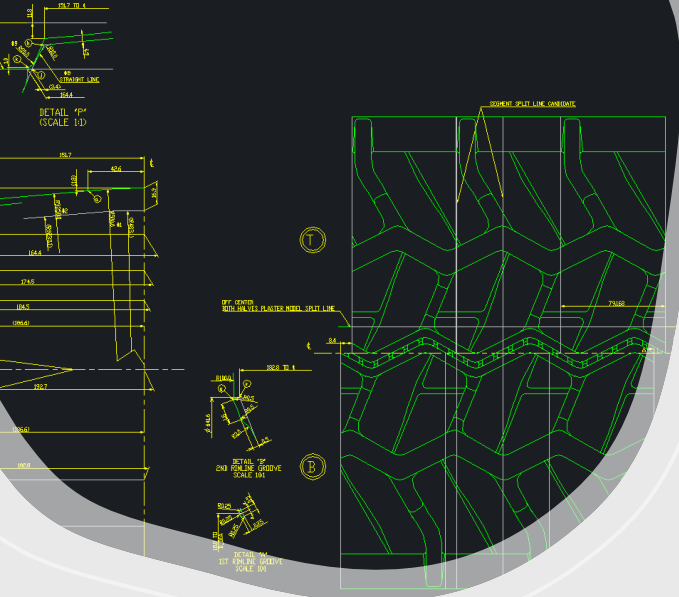


In line with these purposes, at the company facilities;

By investing in solar energy, **it was ensured that the company generates 70% of annual electricity use,**

- Employees are provided with a healthy, safe and clean working environment,
- It is ensured that the applicable laws, regulations and standards are strictly complied with.





Technical Capabilities Engineering

- KÖSEMEN, with the knowledge and experience it has brought over the years, supports customer demands with engineering service starting from design. By using the latest CAD/CAM software, designs are made according to the demands of the customers.

Technical Capabilities

Raw Materials Used in Production

Steels

- General Structural Steels
- Carbon Steels
- Medium and High Alloy Steels
- Free Cutting Steels
- Cementation Steels

Stainless Steels

- General Structural Steels
- Martensitic Stainless Steels
- Duplex Stainless Steels
- Ferritic Stainless Steels

Non-Ferrous Materials

- Aluminum Series
- Industrial Plastics
- CuSnPb Alloy



Technical Capabilities

Milling Machine and Equipment

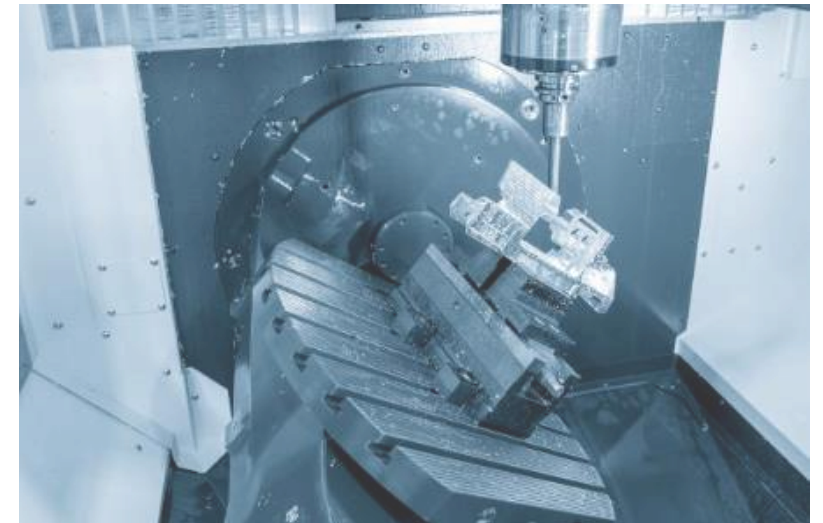
- 5 Axis CNC Milling Machines
- 4 Eksen CNC Milling Machines
- CNC Center Machining Machines
- CNC Bridge Type Center Machining Machine
- Universal CNC Milling Machines

Maximum Ability,
X: 650 mm, Y: 500 mm, Z: 500mm, A: 115°, C: 360°

Maximum Ability,
X: 2400 mm, Y: 1200 mm Z: 650 mm

Maximum Ability,
X: 1200 mm, Y: 700 mm, Z: 500 mm

Maximum Ability,
X: 1200mm, Y: 800mm, Z: 500mm



Technical Capabilities

Turning Machinery and Equipment



Maximum Diameter,
1600 Ø x 1000 mm

Maximum Diameter,
800 Ø x 600 mm

- Vertical CNC Lathe Machines
- C Axis Vertical Lathe Machine
- Universal Lathe Machines



Technical Capabilities

Other Machinery and Equipment

- CNC EDM
- CNC Drilling EDM Machines
- Laser Welding Machine

Maximum Power,
150 Watt


Maximum Ability,
X: 600 mm, Y: 400 mm, Z: 400 mm

Maximum Ability,
X: 500 mm, Y: 250 mm, Z: 300 mm



Technical Capabilities

Quality Machinery and Equipment

- **CMM Machine**  *Maximum Ability,*
X: 900 mm, Y: 1600 mm, Z: 600 mm
«Profile scanning capability»



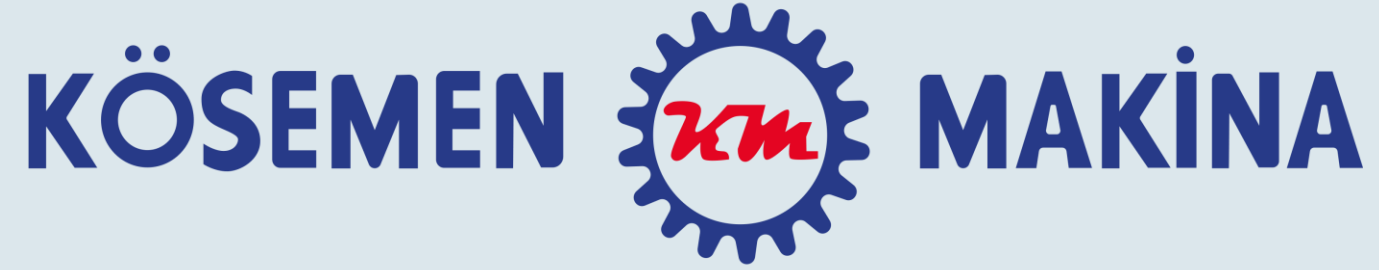
Our References

«We produce high quality products for global companies in different sectors.»



Industry-Leading Clients

It manufactures locally and globally, to the leading companies in their sectors, in high quality and at world standards, tailored to their demands.



Acısu Mahallesi Vatan Caddesi, No 22 Kartepe / Kocaeli